

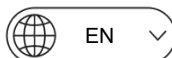


INSTRUCTION MANUAL



ELECTRIC SPIN SCRUBBER

TT-MS30





Thank you for purchasing the **MASTER SCRUBBER** Electric Spin Scrubber by **TurboTronic**®.

The cleaning brush that allows you to clean any surface with minimal effort. Powered by a 3.7V lithium battery, this cordless device saves you time and energy as it cleans kitchen sinks, windows, bathrooms, tiles, floors, and more.

From kitchen counters to windows and bathtub walls, this electric brush can clean efficiently with any liquid soap or cleaner. It comes with three interchangeable and detachable brush heads to meet your diverse cleaning needs.

ITEM NUMBER:	TT-SM30	BRAND	TurboTronic
PRODUCT SIZE	208*125*63mm	RUNNING TIME:	180 min (no-load) 60 min (with load)
GB PACKAGE SIZE	235*175*77mm	N.W:	0.42kg
MC PACKAGING SIZE:	495*385*255mm	G.W:	0.70kg
DESCRIPTION:	Electric Spin Scrubber	POWER CORD:	Out 1.0m A to C
POWER & VOLTAGE	5W, 3.7V	NOISE:	≤75DB
CHARGING TYPE	Type C (USB)	CHARING TIME:	≤3H



IMPORTANT SAFEGUARDS

When using electrical appliances, basic safety precautions should always be followed to reduce the risk of fire, electric shock, and/or injury to persons, including the following:

1. Children must be supervised by an adult. Do not allow children to play with the cleaning brush.
2. This appliance is for home use only. Do not use it outdoors.
3. When unplugging the charging cable, please grasp the plug and do not pull the cable.
4. Do not leave the cleaning brush unattended when the power is on to avoid harm.
5. If the charging cord is damaged, it must be replaced by a qualified service person. Do not attempt to replace it yourself, as it may cause harm.
6. The use of the following objects is strictly prohibited, as they may damage the appliance or cause a fire, posing a risk to human safety.
7. Frequently check the device and charger for damage.
8. Do not continue to use the device if it is damaged in any way.
9. Do not open the device or charger, and do not attempt to replace the power cord yourself.
10. Do not attempt to repair the appliance yourself, as this may cause injury.
11. When charging the appliance, be careful not to trip over the charging cable.
12. Keep the cord away from hot surfaces, such as cooking utensils and other hot objects.
13. Do not touch the charging cable with wet hands.
14. When using the cleaning brush, do not point it at people or animals.
15. Use only the accessories provided.
16. Store this manual in a safe place.
17. Use the provided charging cable.
18. Do not allow children, the elderly, or infirm individuals to use this appliance.

FOR HOUSEHOLD USE ONLY

SAVE THESE INSTRUCTIONS

CLEANING AND STORAGE

Do not use steel wool, abrasive cleaners, or corrosive liquids (e.g., gasoline, acetone) to clean the product. The main unit can be wiped down with a mild detergent and a soft sponge. Do not rinse, soak, or spray water or other liquids onto the product, as this may damage the appliance. Soak brushes in soapy water before rinsing. Ensure the product is clean and dry before storing. Store the product indoors in a cool, dry place.

TECHNICAL SPECIFICATION

Input: 3.7V DC (1 x 3.7V 2000mAh Li-ion battery)

Waterproof rating: IPX7

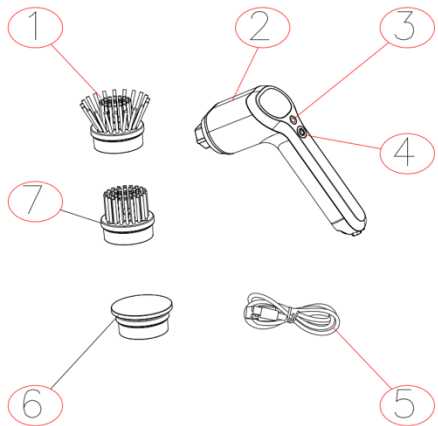
Operating temperature: 0°C to 35°C

Storage temperature: -10°C to 45°C

Atmospheric humidity: Maximum 85%

DESCRIPTION OF ACCESSORIES

1. Corner brush - Head B
2. Body
3. Charging Indicator
4. On/Off Button
5. Charging Cable
6. Sponge Brush - Head C
7. Flat brush - Head A



1. There are three brush heads

to choose from. To select and attach a brush head, hold down the rotary button, press the head down vertically until you hear a clicking sound, then release the button.

2. Press the ON/OFF button to start the scrubbing brush. To turn it off, press the ON/OFF button again.

Tips to Improve Performance:

The appliance is suitable for use with various types of cleaning agents, including sprays, foams, gels, liquids, and bleaches. Do not use friction cleaners.



Warning! Please wear gloves and glasses for personal protection.

Always follow these safety measures:

- Read all instructions before use.
- Check all relevant information carefully before using this product.
- Do not place the main unit in water or other liquids to avoid damaging the motor.
- This equipment is not intended for use by persons (including children) with limited physical, sensory, or mental capabilities, or lack of experience and knowledge, unless they are supervised or instructed by a person responsible for their safety. Children should be supervised to ensure they do not play with this equipment. Using essential oils not recommended or supplied with the product may cause personal injury.
- The appliance must always be used in accordance with the user instructions supplied with the product and must not be used for any other purpose.
- Switch off the appliance before replacing accessories.
- Before using the product, ensure the brushes are securely in place.
- Do not point the brush at people as this may cause injury.
- Do not operate the product near any explosive or flammable objects or liquids.
- Keep hair, loose clothing, jewelry, and all body parts away from moving parts.
- Always wear eye protection when using scrubbers that contain irritants. You may also wear rubber gloves.
- This product is for household use only and is not designed for

commercial use.

- Do not expose the product to high temperatures, strong magnetic fields, or flammable or explosive gases (e.g., natural gas, methane) to avoid accidents such as abnormal operation or fire.
- Cleaning and user maintenance must not be performed by children without supervision.



WARNING: Keep appliances dry.

HOW TO CHARGE

Note: Lift the charging cover at the back of the machine and plug in the data cable to charge it.

1. The machine does not operate while charging. (Ensure the machine is turned off before charging.)
2. While charging, the indicator light will glow green.
3. Once fully charged, please disconnect the power cable.

IMPORTANT: Use only the charging cable provided with your purchase!

CHARGING INDICATOR LIGHT

1. When charging, the green indicator light flashes.
2. When charging is complete, the green indicator light stays on.
3. During use, the green indicator light remains on.
4. When the battery is low, the green charging indicator light flashes.
5. When the battery is completely drained, the charging indicator light turns off.

HOW TO DISPOSE OF USED BATTERIES

When disposing of the device, please remove the battery first. Do not dispose of the used battery with your regular garbage; instead, take it to an authorized local recycling center. If you are unable to remove the battery yourself, please seek guidance or assistance from the local recycling center.

MAINTENANCE

When this product malfunctions, be sure to have it serviced by a professional.

DISPOSAL OF OLD ELECTRICAL APPLIANCES:



The European directive 2002/96/EC on Waste Electrical and Electronic Equipment (WEEE), requires that old household electrical appliances must not be disposed of in the normal unsorted municipal waste stream. Old appliances must be collected separately in order to optimize the recovery and recycling of the materials they contain and reduce the impact on human health and the environment.

The crossed out “wheeled bin” symbol on the product reminds you of your obligation, that when you dispose of the appliance, it must be separately collected. Consumers should contact their local authority or retailer for information concerning the correct disposal of their old appliance.

LIMITED WARRANTY:

Limited Warranty applies to purchases made from authorized retailers of **TurboTronic®**.

TurboTronic® Warranty coverage applies to the original owner and to the original product only and is not transferable.

TurboTronic® warrants that the unit shall be free from defects in material and in workmanship. The Limited Warranty applies only when the unit is used under normal household conditions and maintained according to the requirements stated in the Owner’s Guide, subject to the following conditions and exclusions:

ANY WARRANTY OR AFTER PURCHASE SERVICE, SHOULD BE WITH A THIRD-PARTY COMPANY, FROM WHICH YOU PURCHASED THE PRODUCT. TURBOTRONIC® PROVIDES THE WARRANTY ONLY TO OUR THIRD-PARTY SUPPLIERS. SINCE THIS PRODUCT IS NOT PURCHASED DIRECTLY FROM TURBOTRONIC® BUT THROUGH ONE OF OUR THIRD-PARTY SUPPLIERS,

ANY ISSUE AFTER THE PURCHASE, CUSTOMER SERVICE OR RECEIVING THE WARRANTY, SHOULD BE ONLY / DIRECTLY DEALT WITH THROUGH THE THIRD-PARTY SUPPLIER FROM WHICH YOU PURCHASED THE PRODUCT.

What is covered by this warranty?

1. The original unit and/or non-wearing parts deemed defective will be repaired or replaced, at **TurboTronic®** sole discretion,
2. **TurboTronic®** reserves the right to replace the unit with one of equal or greater value.

What is not covered by this warranty?

1. Normal wear and tear of wearing parts (such as blending vessels, lids, cups, blades, blender bases, removable pots, racks, pans, etc.), which require regular maintenance and/or replacement to ensure the proper functioning of your unit, are not covered by this warranty.
2. Any unit that has been tampered with or used for commercial purposes.
3. Damage caused by misuse, abuse, negligent handling, failure to perform required maintenance (e.g., failure to keep the well of the motor base clear of food spills and other debris), or damage due to mishandling in transit.
4. Consequential and incidental damages.
5. Defects caused by repair persons not authorized by **TurboTronic®**. These defects include damages caused in the process of shipping, alteration, or repair of the **TurboTronic®** product (or any of its parts) when the repair is performed by a repair person not authorized by **TurboTronic®**.
6. Products purchased, used, or operated outside Europe.

Illustrations may differ from actual product.

We are constantly striving to improve our products, therefore the specifications contained herein are subject to change without notice.

TurboTronic® and **Z-Line®** are registered trademarks of **Z-GLOBAL B.V.B.A®**.

PRINTED IN PRC