

**TURBO WAVE**

# INSTRUCTION MANUAL



Multifunction Electric Oven  
Top Dual Hot Plates  
**TT-EV35TS**

[www.zline-world.com](http://www.zline-world.com)



Thank you for buying **TurboWave** - Electric Oven by **TurboTronic®**.

You will now be able to cook a wide assortment of delicacy food. TT-EV35TS Multifunction Electric Oven Top Dual Hot Plates it's like a Full-size oven performance on your countertop, perfect for Baking, Reheating and Grilling 35L and Wide temperature range of 100°C to 230°C. this compact toaster oven lets you toast golden brown bread slices or cook pizzas with a tender, crispy crust in less time.

**220-240V~50Hz, 1600W (OVEN) +1000W +600W**

## **IMPORTANT SAFEGUARDS**

### **HOUSEHOLD USE ONLY. READ ALL INSTRUCTIONS.**

**When using electrical appliance, basic safety precautions should always be followed, including the following:**

Read this user manual carefully, before you use the appliance, and keep it safely for future reference.



### **WARNINGS**

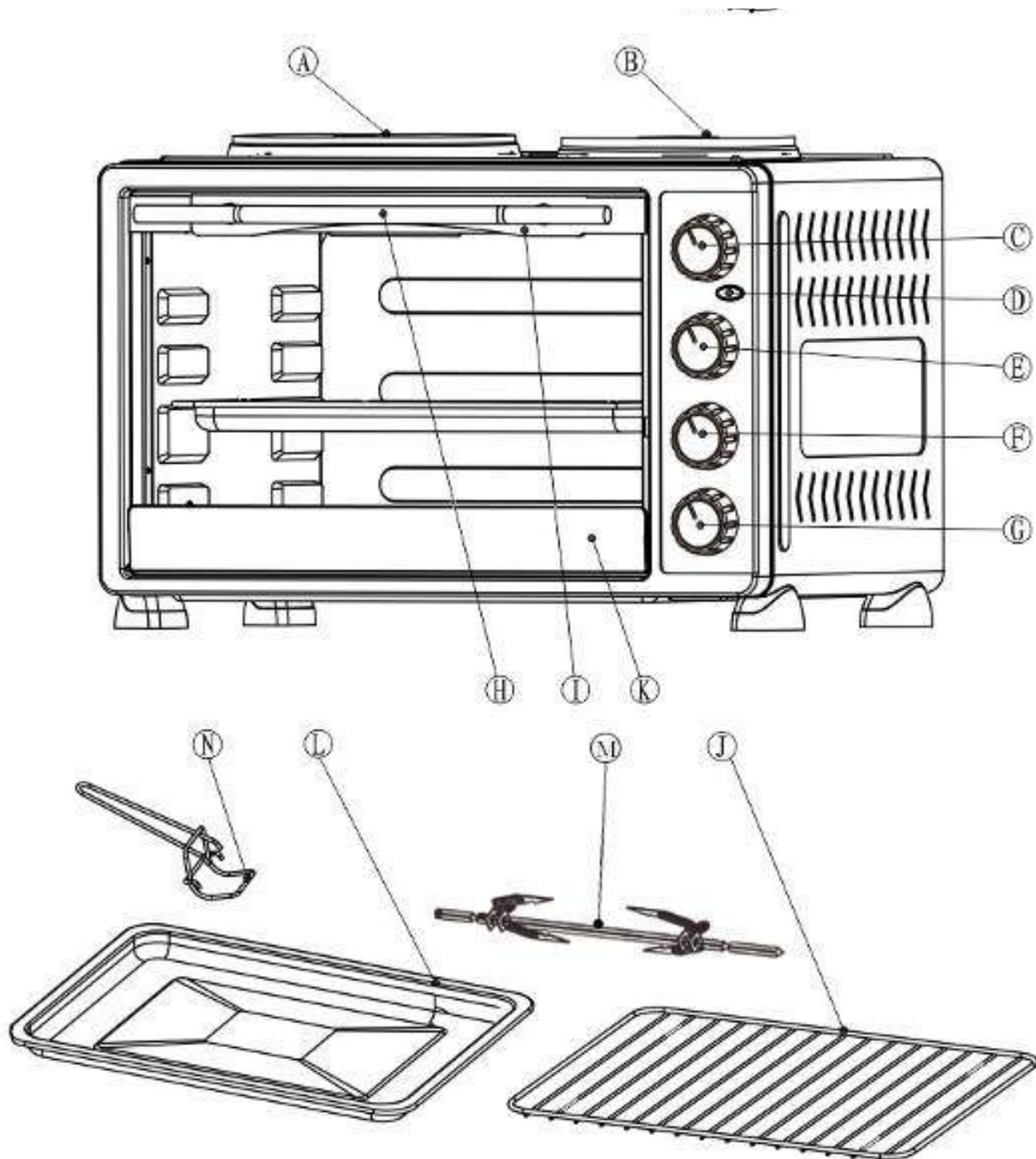
1. **Do not** touch hot surfaces. Always use handles or knobs.
2. Close supervision is necessary when any appliance is used by or near children.
3. To protect against electric shock, do not immerse cord, plug or any parts of the oven in water or any other liquids.
4. **Do not** let cord hang over edge of table or counter, or touch hot surfaces.
5. **Do not** operate an appliance with a damaged cord or plug or after the appliance malfunctions or has been damaged in any manner. Return the appliance to the nearest authorized service facility for examination, repair or adjustment.
6. The use of accessory attachments not recommended by the appliance manufacturer may cause hazard or injury.
7. **Do not** place on or near a hot gas or electric burner.
8. When operating the oven, keep at least four inches of free space on all sides of the oven to allow for adequate air circulation.
9. Unplug from outlet when not in use and before cleaning.  
Allow to cool before putting on or taking off parts and before cleaning.
10. To disconnect, turn the time control to OFF, then remove the plug. Always hold the plug, and never pull the cord.
11. Extreme caution must be used when moving a drip pan containing hot oil or other hot liquids.
12. **Do not** cover any part of the oven with metal foil. This may cause the oven to overheat.
13. Use extreme caution when removing the tray, racks or disposing of hot grease or other hot liquids.
14. **Do not** clean the inside of the oven with metal scouring pads. Pieces can break off the pad and touch electrical parts, creating a risk of electric shock.
15. Oversized foods or metal utensils must not be inserted in a toaster oven as they may create a fire or an electric shock.
16. A fire may occur if the oven is covered or touching flammable material, including the curtains, draperies, walls, and the like, when in operation. Do not store any item on top of the appliance when in operation.
17. Extreme cautions should be exercised when using cooking or baking containers constructed of anything other than metal or ovenproof glass.
18. Be sure that nothing touches the top or bottom

elements of the oven.

19. **Do not** place any of the following materials in the oven: cardboard, plastic, paper or anything similar.
20. **Do not** store any materials other than the manufacturer's recommended accessories in this oven when not in use.
21. Always wear protective, insulated oven gloves when inserting or removing items from the hot oven.
22. This appliance has a tempered, safety glass door. The glass is stronger than ordinary glass and more resistant to breakage. Tempered glass can still break around the edges. Avoid scratching the door surface or nicking the edges.
23. This appliance is OFF when the Timer Control button is in the "OFF" position.
24. **Do not** use outdoors.
25. **Do not** use this appliance for other than its intended use.
26. manufacturer's recommended accessories in this oven when not in use.
27. Always wear protective, insulated oven gloves when inserting or removing items from the hot oven.
28. This appliance has a tempered, safety glass door. The glass is stronger than ordinary glass and more resistant to breakage. Tempered glass can still break around the edges. Avoid scratching the door surface or nicking the edges.
29. This appliance is OFF when the Timer Control button is in the "OFF" position.
30. **Do not** use outdoors.
31. **Do not** use this appliance for other than its intended use.

# GETTING TO KNOW YOUR ELECTRIC OVEN

## MAIN COMPONENT:



A: Left Hotplate: 1000W  
B: Right Hotplate: 600W  
C: Hotplate knob  
D: Neon Lamp  
E: Temperature Knob  
F: Heater Knob  
G: Timer

H: Door Handle  
I: Upper Door Frame  
J: Wire Rack  
K: Lower door frame  
L: Bake Tray  
N: Tray Handle  
M : Rotisserie set

## **Technical Specifications**

Voltage: 220-240V/ 50Hz.

Power: 1600W+1000W+600W

## **BEFORE USING YOUR OVEN**

1. Read all instruction included in this manual.
2. Make sure the oven is unplugged and the **Timer** is in the “OFF” position.
3. Wash all accessories in hot, soapy water.
4. Thoroughly dry all accessories and re-assemble them in the oven. Plug the oven into outlet.
5. After re-assembling your oven, run it at 230°C with the Upper & Lower Heating function for approximately 15 minutes to eliminate any packing residue what may remain after shipping. This will also remove all traces of odor initially present.

**Please Note:** Initial start-up operation may result in smell and smoke (about 15 minutes). This is normal and harmless. It is due to burning of the protective substance applied to the heating elements.

### ● **Heating Selection:**



upper heaters



convection



lower heaters



rotisserie



upper and lower heaters




convection and rotisserie

**WARNING:** TO AVOID RISK OF INJURY OR BURNS, DO NOT TOUCH HOT SURFACES WHEN OVEN IS IN USE. SUGGEST USING GLOVES.

**CAUTION:** Always be extremely careful when removing bake tray, wire rack or any hot containers from a hot oven.


## **HOW TO BROIL**

### **Operation:**

- a) Insert the removable bake rack with food and bake tray.
- b) Keep the glass door half-open.
- c) Turn the heat selector knob to Broil. 
- d) Select the temperature.
- e) Turn the timer knob to the desired cooking time.
- f) When finished broiling, turn the timer to "OFF" position to switch off the oven.

## **HOW TO TOAST**

### **Operation:**


- a) Set the Temperature to highest.
- b) Place the removable rack into the desired position.
- c) Turn the function control knob to Toast. 
- d) Place food to be toasted on the wire rack.
- e) Turn the timer knob to the desired cooking time.
- f) When finished toasting, turn the timer to "OFF" position to switch off the oven.

**Note:** Wire Rack should be positioned in the middle of the oven with the indentations pointing down.

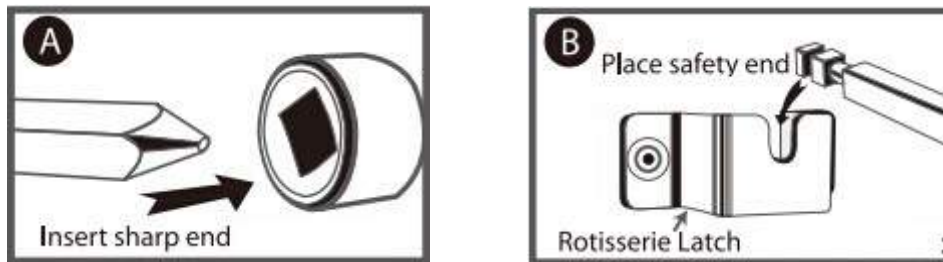
## **HOW TO BAKE**

### **Operation:**

Please note that BAKE function only use bottom heating elements.

- a) Place the removable rack into the desired position.
- b) Insert the bake tray and close the oven door.
- c) Turn the timer knob to the desired cooking time.
- d) Turn the heater selector knob to Bake. 
- e) Select the temperature.
- f) When finished baking, turn the timer to "OFF" position to switch off the oven.

## HOW TO USE ROTISSERIE



**A rotisserie is ideal for cooking chicken and meat. Follow below steps:**

- (1) Put food in the middle of a rotisserie fork.
- (2) Insert the sharp end of rotisserie into the right side of oven. (Like picture A)
- (3) Place the square end of rotisserie into the left side of oven. (Like picture B)
- (4) After cooking finished, take the whole rotisserie out of oven by a rotisserie handle.

## USING YOUR HOTPLATES

Before using your cooker for the first time, be sure to:

1. **Read all of the instructions included in the manual.**
2. **Make sure that the cooker is unplugged and the function controller is to the “OFF” position.**
3. **Thoroughly dry all accessories and re-assemble in cooker, plug cooker into outlet and you are ready to use your new cooker.**

### **Left Hotplate (1000W)**

Operation:

- Place food to be cooked on the hot plate.
- Turn the temperature controller knob to the desired setting.
- When cooking is complete, turn the controller to “OFF”

### **Right Hotplate (600W)**

Operation:

- Place food to be cooked on the hot plate.
- Turn the temperature controller knob to the desired setting.
- When cooking is complete, turn the controller to “OFF”

### **Positioning of the Wire Racks**

Cookies – Use bottom and middle Support Guides.

Layer Cakes – Use bottom Support Guide only (bake one at a time).

Pies – Use bottom and middle Support Guides.

**CAUTION:** Always use extreme care when removing bake tray, wire rack or a any hot container from a hot oven. Always use the rack handle, or an oven mitt when removing hot items from the oven.

## **CARE & CLEANING**

**Warning: Be sure to unplug the oven and cool it before cleaning.**

If desired, wipe the walls with a damp sponge, cloth or nylon scouring pad and mild detergent. **DO NOT USE STEEL WOOL SCOURING PADS, ABRASIVE CLEANERS OR SCRAPE THE WALLS WITH A METAL UTENSIL, AS ALL OF THESE METHODS MAY DAMAGE THE CABINET.**

All accessories should be washed in hot soapy water or can be cleaned in a dishwasher. Then keep them dry. The door can be wiped with a damp sponge and wiped dry with a paper or cloth towel. Clean the outside with a damp sponge. **DO NOT USE AN ABRASIVE CLEANER AS IT MAY DAMAGE THE EXTERIOR FINISH. DO NOT IMMERSE THE OVEN INTO WATER.**

All accessories should be washed in hot soapy water or can be cleaned in a dishwasher. The door can be wiped with a damp sponge and wiped dry with a paper or cloth towel. Clean the outside with a damp sponge. **DO NOT USE AN ABRASIVE CLEANER AS IT MAY DAMAGE THE EXTERIOR FINISH.**

**DO NOT USE AN ABRASIVE CLEANER OR STEEL WOOL SCOURING PAD ON THE DRIP PAN AS IT MAY DAMAGE THE PORCELAIN ENAMEL FINISH.**

**LET ALL PARTS AND SURFACES DRY THOROUGHLY PRIOR TO PLUGGING OVEN IN AND USING.**

Due to continuous product improvement, specifications subject to change without prior notice.

### **WARNING**

This appliance is not intended for use by persons (including children) with reduced physical sensory or mental capabilities, or lack of experience and knowledge, unless they have been given supervision or instruction concerning use of the appliance by a person responsible for their safety. Children should be supervised to ensure that they do not play with the appliance.

1. Never use the device unsupervised! Switch off the device whenever you are not using it, even if this only for short while.
2. This appliance is not intended to be operated by means of an external timer or separate remote-control system.
3. If the supply cord is damaged, it must be replaced by the manufacturer, it's service agent or similarly qualified persons in order to avoid a hazard.
4. Do not immerse this product in liqui



## Disposal of old electrical appliances



The European directive 2002/96/EC on Waste Electrical and Electronic Equipment (WEEE), requires that old household electrical appliances must not be disposed of in the normal unsorted municipal waste stream. Old appliances must be collected separately in order to optimize the recovery and recycling of the materials they contain, and reduce the impact on human health and the environment. The crossed out “wheeled bin” symbol on the product reminds you of your obligation, that when you dispose of the appliance, it must be separately collected. Consumers should contact their local authority or retailer for information concerning the correct disposal of their old appliance.

## LIMITED WARRANTY

Limited Warranty applies to purchases made from authorized retailers of **TurboTronic®**.

**TurboTronic®** Warranty coverage applies to the original owner and to the original product only and is not transferable.

**TurboTronic®** warrants that the unit shall be free from defects in material and workmanship. Limited Warranty apply only when it is used under normal household conditions and maintained according to the requirements outlined in the Owner's Guide, subject to the following conditions and exclusions:

### What is covered by this warranty?

1. The original unit and/or non-wearable parts deemed defective, in **TurboTronic®** sole discretion, will be repaired or replaced
2. **TurboTronic®** reserves the right to replace the unit with one of equal or greater value.

### What is not covered by this warranty?

1. Normal wear and tear of wearable parts (such as blending vessels, lids, cups, blades, blender bases, removable pots, racks, pans, etc.), which require regular maintenance and/or replacement to ensure the proper functioning of your unit, are not covered by this warranty.
2. Any unit that has been tampered with or used for commercial purposes.
3. Damage caused by misuse, abuse, negligent handling, failure to perform required maintenance (e.g., failure to keep the well of the motor base clear of food spills and other debris), or damage due to mishandling in transit.
4. Consequential and incidental damages.
5. Defects caused by repair persons not authorized by **TurboTronic®**. These defects include damages caused in the process of shipping, altering, or repairing the **TurboTronic®** product (or any of its parts) when the repair is performed by a repair person not authorized by **TurboTronic®**.
6. Products purchased, used, or operated outside Europe.

Illustrations may differ from actual product.

We are constantly striving to improve our products, therefore the specifications contained herein are subject to change without notice.

**TurboTronic®** and **Z-Line®** are registered trademarks of **Z-GLOBAL B.V.B.A®**.