

TurboTronic®
House Electronics

EN

iQ HYBRID

INSTRUCTION MANUAL



**Cordless cyclonic vacuum cleaner
TT-iQ9**

www.zline-world.com



Dear Customer

We congratulate you on the purchase of this **TurboTronic** practical cordless cyclonic vacuum cleaner, which thanks to the 2 in 1 nozzle, the floor nozzle and the suction pipe, allows you

to vacuum even hard-to-reach places easily and wirelessly.

Please read these operating instructions carefully before installation and commissioning in order to familiarize yourself with your new device and to achieve maximum operational safety. In particular, the safety regulations must be observed to avoid accidents and damage. We recommend that you keep the instructions carefully for future reference.

Read this instruction manual carefully before operating the unit and keep it for future use. Failure to observe and comply with these instructions may result in an accident.

WARNINGS

- This equipment may be used by children aged 8 years and over and by persons with reduced physical, sensory or mental abilities or without experience or knowledge, if they are properly supervised or if instructions on the safe use of the equipment have been given to them and the risks involved have been understood.
- Children should not play with the device. Cleaning and maintenance by the user must not be carried out by unsupervised children.
- This unit should only be recharged with the charger provided.

Please take care of the instruction for future use.





-This appliance is for family use only. Do not use outdoors

-When unplugging the charger, please hold the plug, do not pull the power cord

-Do not leave the vacuum cleaner when the power is on, so as not to cause harm

-If the power cord is damaged, it must be replaced by a maintenance worker. Do not replace without permission, so as not to cause harm

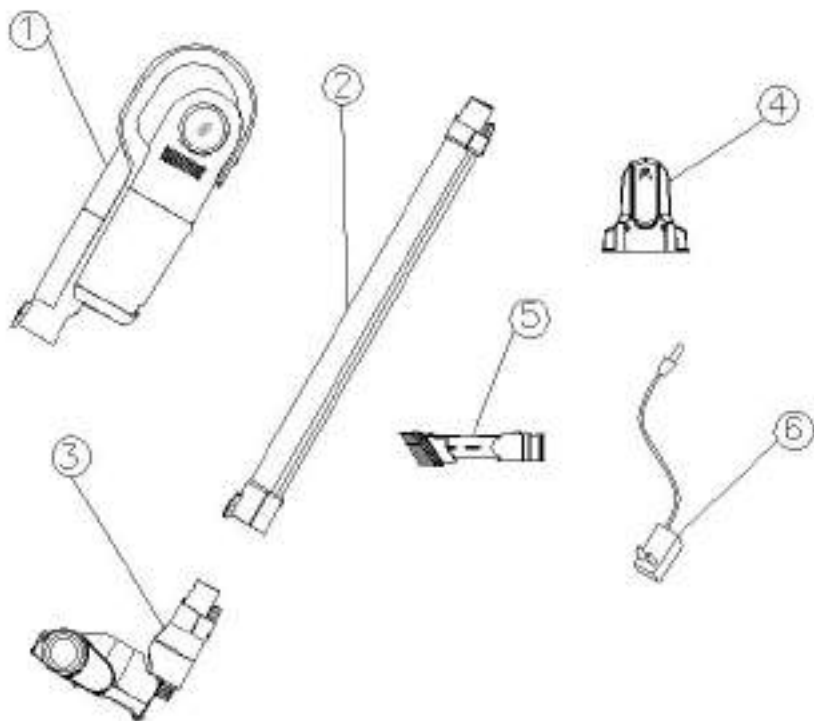
- The following objects are strictly prohibited, otherwise it will damage the vacuum cleaner or cause fire, causing harm to human body.
- Do not absorb large or sharp objects, such as glass
- Do not absorb reactive liquids (e.g. soluble, corrosive, detergent, etc..)
- Do not absorb flammable or explosive objects, such as gasoline, alcohol...
- Always check equipment or charger for damage.
- If there is any damage to the airframe or other places, please do not continue to use. Do not open the device or charger without permission, and do not replace the power cord by yourself. Please send the machine to professional maintenance personnel for maintenance. Do not try to repair the machine by yourself to avoid injury
- Please pay special attention not to trip the power cord when charging the machine
- Keep power lines away from hot surfaces. (e.g. cooking utensils and other hot objects).
- Do not touch the charger or power cord with damp hands.
- When using a vacuum cleaner, do not aim the cleaner at people or animals.
- Please use the accessories provided.
- Please store this manual in a safe place.
- Please use the charger provided.
- Keep out of the hands of children and the elderly and infirm.
- If there is an overflow of inhaled liquid, please check whether the dust bucket is full, otherwise it will block the filter bag or seriously damage the vacuum cleaner.

	Indicates to read and review instructions to understand operation and use of product.
	Indicates the presence of a hazard that can cause personal injury, death or substantial property damage if the warning included with this symbol is ignored.
	Take care to avoid contact with hot surface. Always use hand protection to avoid burns.
	For indoor and household use only.

SAVE THESE INSTRUCTIONS

PARTS DESCRIPTION

- 1, Handheld components
- 2, Tube
- 3, Floor brush
- 4, Wall bracket
- 5, 2 in 1 crevice nozzle & small brush
- 6, Adapter



HOW TO CHARGE

Attention: Screw the wall bracket with the screws at a suitable height on the wall, it should be installed near an electrical outlet. 。

- 1 , Place the vacuum cleaner on the wall bracket
- 2 , Plug the adapter into the socket. (make sure the machine is turned off before charging)
- 3 , When charging, the three indicator lights on the display board flash in turn. When the three-indicator light are on for a long time, it means that the machine is fully charged
- 4 , After charging, please unplug the charger.
- 5 , The charger may get hot during charging.

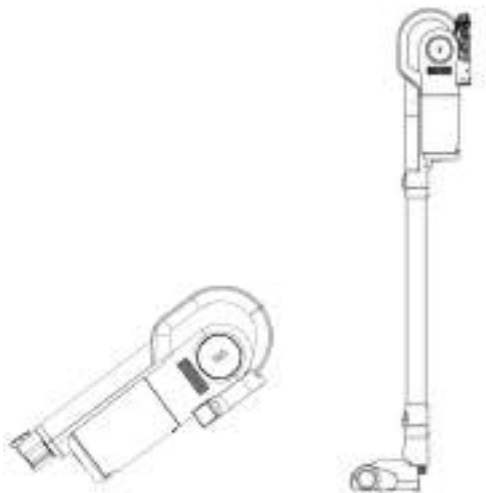
Important: please be sure to use the charger provided when purchasing to charge!

USE AND FUNCTION

Do not use this product while charging.

Please check whether there is rarity in the flat suction frequently. If there is a foreign body, it may scratch your floor.

- 1 , Insert crevice nozzle into main engine for cleaning table, car interior, corner, etc.



- 2 , Mount the suction pipe and floor nozzle on the motor unit.

a. Push the floor nozzle into the lower opening of the suction pipe until it clicks into place.

b. Press the suction pipe into the connection opening of the motor unit until it clicks into place.

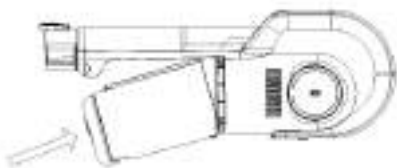


3 , Press the switch button to start up.

4, Press the switch button to turn off

CLEAN THE DUST CUP

1, Press the release button of dust cup and take out the dust cup. Then press the lock button to empty the dust cup

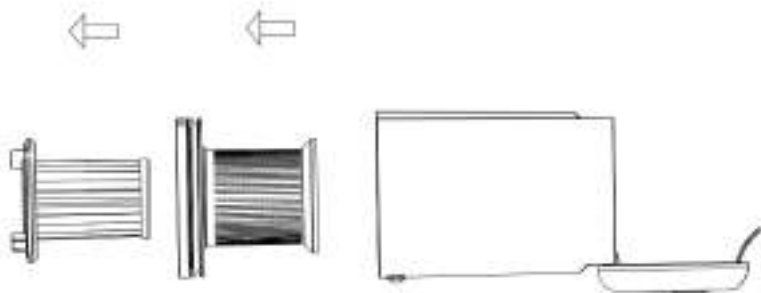


Release button of dust cup



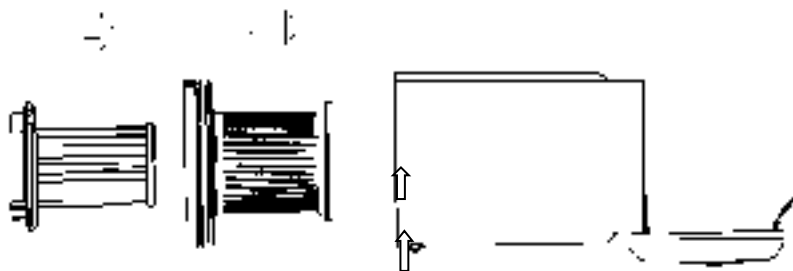
Lock button

2, Remove the filter inside .



3, Clean the filter and dust cup.

4, Put the filter into dust cup.



Important: make sure the filter and dust cup are completely dry before placing them in place.

HOW TO DISPOSE OF THE OLD BATTERY

Remove the battery from the device before discarding it.

Do not put the discarded batteries with the daily garbage

Put together; The batteries should be sent to a local authority recycling center.

If you can't remove the battery yourself,

Your local recycling center will take it down.

MAINTENANCE

When this product fails, please be sure to have professional repair.

TECHNICAL SPECIFICATIONS:

Model: TT-iQ9

Brand: **TurboTronic®**

Voltage: 22.2V

Charging time: 4 to 5 hours.

DISPOSAL OF OLD ELECTRICAL APPLIANCES



The European directive 2002/96/EC on Waste Electrical and Electronic Equipment (WEEE), requires that old household electrical appliances must not be disposed of in the normal unsorted municipal waste stream. Old appliances must be collected separately in order to optimize the recovery and recycling of the materials they contain, and reduce the impact on human health and the environment.

The crossed out “wheeled bin” symbol on the product reminds you of your obligation, that when you dispose of the appliance, it must be separately collected.

Consumers should contact their local authority or retailer for information concerning the correct disposal of their old appliance.

LIMITED WARRANTY

Limited Warranty applies to purchases made from authorized retailers of **TurboTronic®**.

TurboTronic® Warranty coverage applies to the original owner and to the original product only and is not transferable.

TurboTronic® warrants that the unit shall be free from defects in material and workmanship. Limited Warranty apply only when it is used under normal household conditions and maintained according to the requirements outlined in the Owner's Guide, subject to the following conditions and exclusions:

What is covered by this warranty?

1. The original unit and/or non-wearable parts deemed defective, in **TurboTronic®** sole discretion, will be repaired or replaced
2. **TurboTronic®** reserves the right to replace the unit with one of equal or greater value.

What is not covered by this warranty?

1. Normal wear and tear of wearable parts (such as blending vessels, lids, cups, blades, blender bases, removable pots, racks, pans, etc.), which require regular maintenance and/or replacement to ensure the proper functioning of your unit, are not covered by this warranty.
2. Any unit that has been tampered with or used for commercial purposes.
3. Damage caused by misuse, abuse, negligent handling, failure to perform required maintenance (e.g., failure to keep the well of the motor base clear of food spills and other debris), or damage due to mishandling in transit.
4. Consequential and incidental damages.
5. Defects caused by repair persons not authorized by **TurboTronic®**. These defects include damages caused in the process of shipping, altering, or repairing the **TurboTronic®** product (or any of its parts) when the repair is performed by a repair person not authorized by **TurboTronic®**.
6. Products purchased, used, or operated outside Europe.

Illustrations may differ from actual product.

We are constantly striving to improve our products, therefore the specifications contained herein are subject to change without notice.

TurboTronic® and **Z-Line®** are registered trademarks of **Z-GLOBAL B.V.B.A®**.

PRINTED IN PRC